



# TreeTube

Urban Green Infrastructure

Company presentation

July 2023

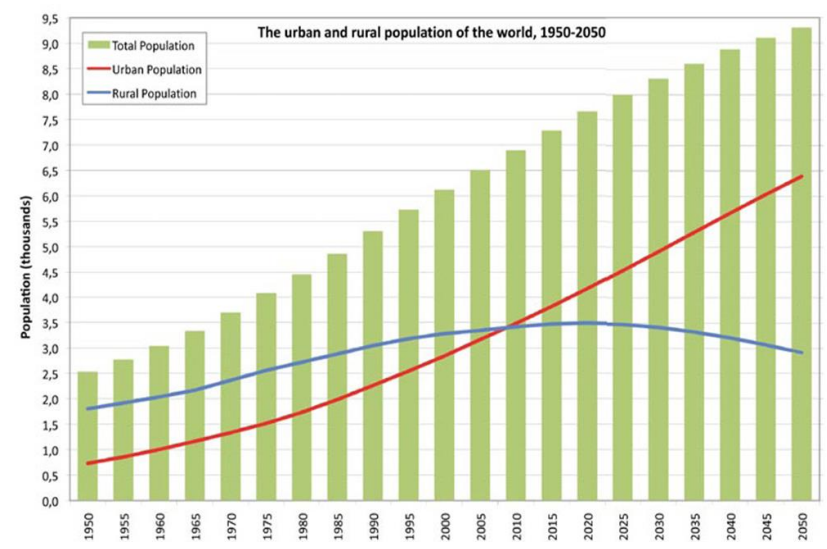
# Climate change & urbanization process



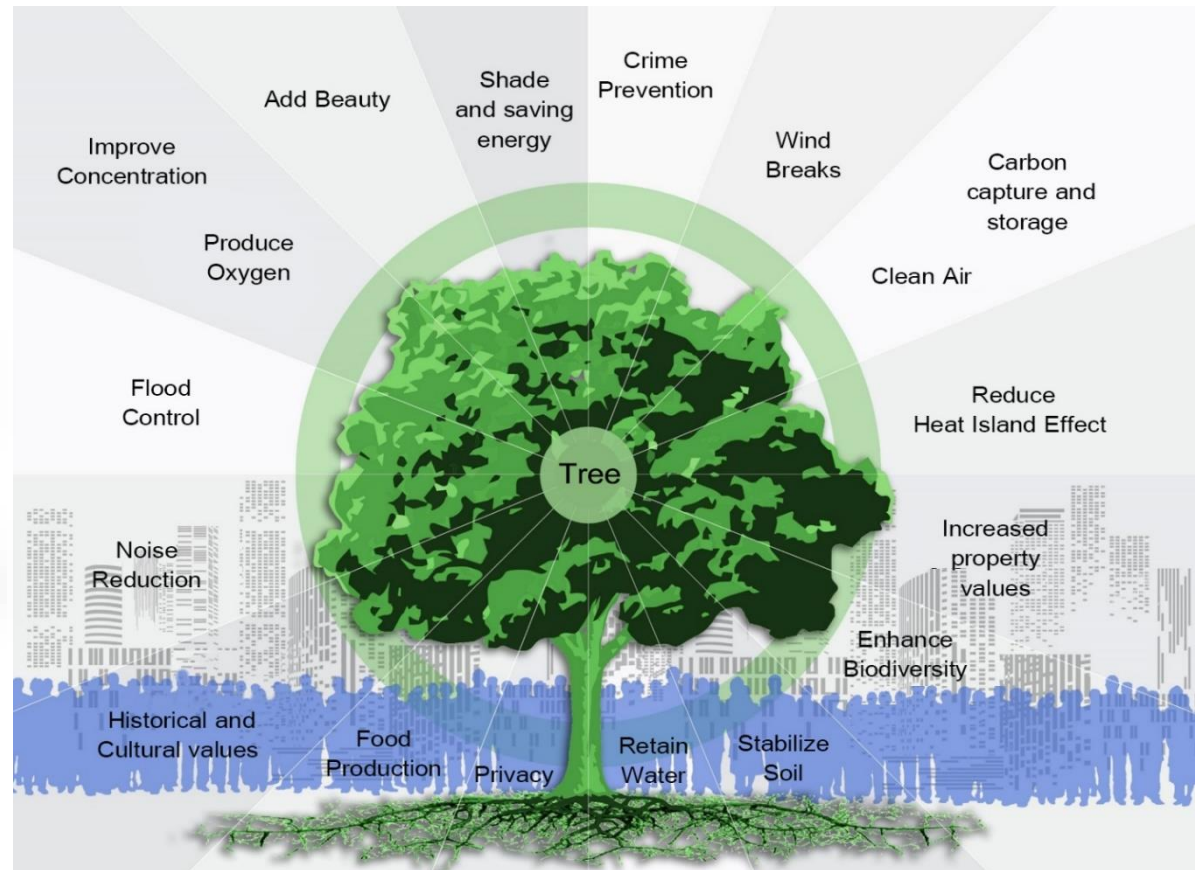
Trees presence significantly reduce the temperature in the street

Hiemstra JA, Saaroni H and Amorim JH. (2017) The Urban Heat Island: Thermal Comfort and the Role of Urban Greening. In: Pearlmutter D, Calfapietra C, Samson R, et al. (eds) The Urban Forest : Cultivating Green Infrastructure for People and the Environment. 7-19.

Half of the earths' inhabitants live in cities, and urbanization is only increasing .



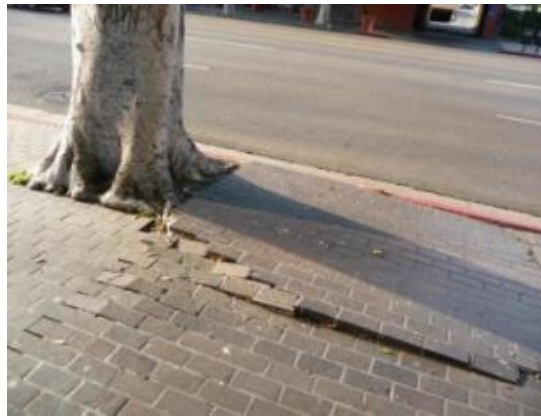
# Importance of trees in urban areas – well known fact



# The pain:

Trees in the Urban area needs to grow in challenging & limiting conditions that create:

- conflicts and damage to infrastructure.
- Poor tree growth: ~ 30% of trees fail to grow



# The challenge:

To create an adequate structure that will enable healthy trees growth in urban environment.

- Parameters:
  - Modular suspended pavement system
  - Load bearing
  - Providing trees with all essential needs.
  - Cost-effective and affordable
  - Easy and quick installation
  - Drainage



# Meet TREE-TUBE



TreeTube  
Urban Green Infrastructure



[tree-tube.com](https://tree-tube.com)

Constructing the urban forest

# Ideal conditions for planting trees under pavements alongside streets:

- **Modular** in order to survive the infrastructure jungle
- Applies to all relevant loading and drainage standards
- Avoiding possible trees damage to cities' infrastructure
- Drainage - Ability to include drainage system
- Lightweight and super strong
- Provides 95% available substrate
- Efficient irrigation and aeration
- Thermal management
- Easy to handle



# Meet CRD – Constructive Root Director





# Treetube systems – Installations



# Oval opening





# Houten, NL Installation



# Houten, NL Installation



# Houten, NL Installation



# Value proposition or – WHY TREETUBE

- Industrializing tree installations.
- Cost effective
- Benefiting from healthy trees:
  - Improved population health
  - Energy savings
  - Maintenance savings
- Super quick to install



Alenbi St. Tel aviv, IL Light train project/ red line

## In the pipeline

- Global expansion
- IOT & Monitoring
- Carbon credit
- Industrializing tree installations
- Trees management
- Green & Blue solution
- Utility





Our challenge is to keep our  
**cities** livable, safe, healthy  
**green** and attractive.





TreeTube  
Urban Green Infrastructure

THANK  
YOU

[tree-tube.com](http://tree-tube.com)

Constructing the urban forest